

RESIDUAL DESIGN HAZARDS
 (The following information has been collected from Preconstruction Information and the Amey CDM Hazard Management Process.)
 No High Risks Present

STREET LIGHTING KEY
 OFF REEPHAM ROAD
 TAVERHAM
 NR10 4EA

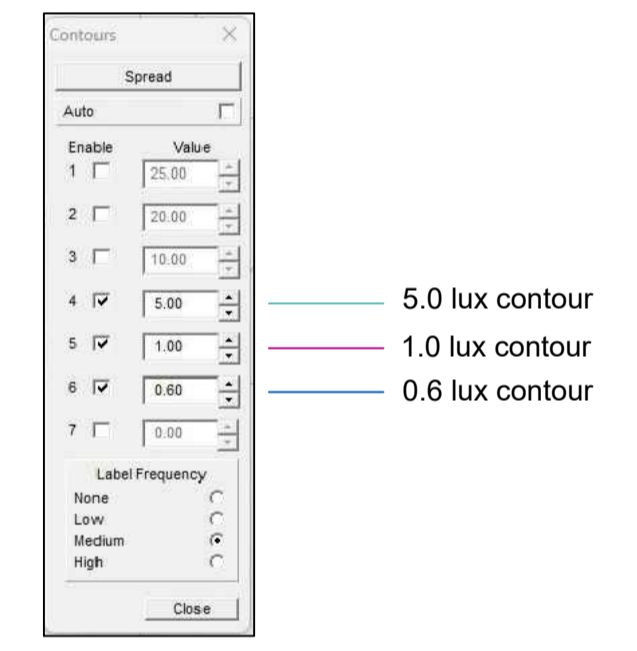
Lantern Detail
 16x
 Urbis Axia 3.1, 8 LED lantern head, post top mounted, complete with 7 pin NEMA socket, & one part photo cell, 2.33Klm output, Neutral white LED colour.
 (AXIA 3.1 5267 8 OSLOM SQUARE GAIANT @600mA NW 740 230v)
 (20watts- UMSUG code 42 0020 0000 100 / Regime code 581)

Lantern to have 7 pin NEMA socket, complete with 1 part photo cell with a switching level of 35/18 lux.
 (Westire Acro or similar approved)
 Lantern head to be wired in black pvc/pvc 1.5mmsq 3 core flex, via a fused double pole isolator located in the base compartment of the lamp column.
 Isolator Specification:-
 Charles Endirect / L2/SF/A1 (LSI/02) CHA.END
 Twin mod unit 32amp DP SWT, Fuse carrier, Plastic Gland-Plate

All Wiring, Cabling, Earthing & Bonding to be installed to the latest (18th) Edition IEE Wiring Regulations

Column Detail
 16x
 Proposed 6m mounting height, galvanised tubular steel column. (Norfolk PFI specification or similar approved)
 Each lamp column to have a 230v single phase unmetred supply installed.
 Install new LED lantern head as per above specification.

Concrete adoptable pad to be provided when no footpath is available. See AMEY SL SD 014 Rev B Hard Margin Detail



- STREET LIGHTING NOTES**
- All works to comply with Taverham Parish council requirements for Street Lighting Works.
 - New column positions to be agreed with parish / site engineer prior to installation.
 - Typical Column setback:
 - Within footpath : Back of Path
 - Within verge : 1.8m from kerb edge
 - Where there is insufficient highway to accommodate a street lighting column, columns are to be located immediately behind the edge of the highway, are to be installed in an area approx 750mm x 450mm deep which is to be dedicated as part of the Highway.
 - All new street lights to be supplied by a new Unmetered service (direct connection to local DNO electricity main)
 - New Development site - developers responsibility to provide suitably positioned supply main at construction stage.
 - All electrical installation work to be carried out in accordance with the requirements of HEA, NICEIC and BS7671 (IET Wiring Regulations latest edition).
 - Electrical Installation Certificates to be forwarded to: Taverham Parish Council offices.
 - Refer to Lighting Design Schedule for detailed apparatus specification.
 - Luminaires should include a 3 pin NEMA socket with a One part photocell (On/Off ; 35/18)

Column Numbering Key:

N - Denotes new service
 T - Denotes transfer of service
 D - Denotes disconnection of service
 (E) - Denotes DNO supply
 (P) - Denotes Private cable supply (NCC)
 R+L - Raise and Lower column required

P01.1	Text	Rev	Revision details	Chkd	Appd	Date
Designed:	LA					Date: 02/2026
Drawn:	LA					Date: 02/2026
Checked:	SC					Date: 03/2026
Approved:	AB					Date: 03/2026



Client
BDW HOMES

Project Name
NEW DEVELOPMENT MARRIOTS PARK TAVERHAM

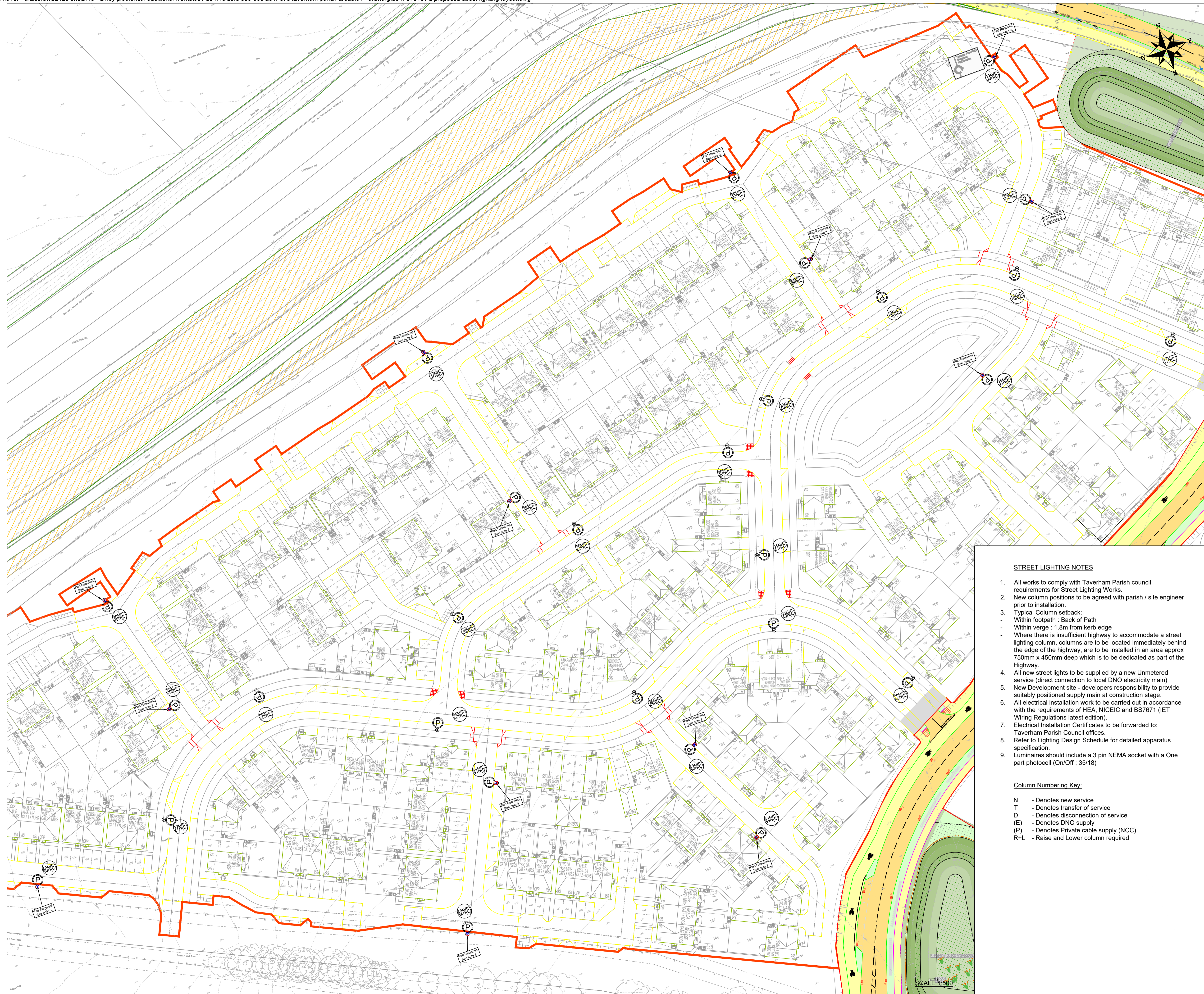
Drawing Title
PROPOSED STREET LIGHTING LAYOUT (Phase 1) INSTALLS PARISH LIGHTING

Original Drawing Size : A1 Scale : 1:500
 Dimensions : -

Drawing Status
PRELIMINARY Suitability
 S0

Drawing No
AC-N-873.1 Rev
 A

SCALE 1:500



RESIDUAL DESIGN HAZARDS
 (The following information has been collected from Preconstruction Information and the Amey CDM Hazard Management Process.)
 No High Risks Present

- STREET LIGHTING KEY**
- OFF REEPHAM ROAD
 TAVERHAM
 NR10 4EA
- Lantern Detail**
- 28x
 Urbis Axia 3.1, 8 LED lantern head, post top mounted, complete with 7 pin NEMA socket, & one part photo cell, 2.33Klm output, Neutral white LED colour.
 (AXIA 3.1 5267 8 OSLO SQUARE GAIN T @600mA NW 740 230v)
 (20watts- UMSUG code 42 0020 0000 100 / Regime code 581)
 - Lantern to have 7 pin NEMA socket, complete with 1 part photo cell with a switching level of 35/18 lux.
 (Westire Acro or similar approved)
 Lantern head to be wired in black pvc/pvc 1.5mmsq 3 core flex, via a fused double pole isolator located in the base compartment of the lamp column.
 - Isolator Specification:-
 Charles Endirect / L2/SF/A1 (LSI/02) CHA.END
 Twin mod unit 32amp DP SWT, Fuse carrier, Plastic Gland-Plate
 - All Wiring, Cabling, Earthing & Bonding to be installed to the latest (18th) Edition IEE Wiring Regulations
- Column Detail**
- 28x
 Proposed 6m mounting height, galvanised tubular steel column. (Norfolk PFI specification or similar approved)
 Each lamp column to have a 230v single phase unmetred supply installed.
 Install new LED lantern head as per above specification.
 - Concrete adoptable pad to be provided when no footpath is available. See AMEY SL SD 014 Rev B Hard Margin Detail

STREET LIGHTING NOTES

1. All works to comply with Taverham Parish council requirements for Street Lighting Works.
2. New column positions to be agreed with parish / site engineer prior to installation.
3. Typical Column setback:
 - Within footpath : Back of Path
 - Within verge : 1.8m from kerb edge
 - Where there is insufficient highway to accommodate a street lighting column, columns are to be located immediately behind the edge of the highway, are to be installed in an area approx 750mm x 450mm deep which is to be dedicated as part of the Highway.
4. All new street lights to be supplied by a new Unmetered service (direct connection to local DNO electricity main)
5. New Development site - developers responsibility to provide suitably positioned supply main at construction stage.
6. All electrical installation work to be carried out in accordance with the requirements of HEA, NICEIC and BS7671 (IET Wiring Regulations latest edition).
 Electrical Installation Certificates to be forwarded to: Taverham Parish Council offices.
7. Refer to Lighting Design Schedule for detailed apparatus specification.
8. Luminaires should include a 3 pin NEMA socket with a One part photocell (On/Off ; 35/18)

- Column Numbering Key:**
- N - Denotes new service
 - T - Denotes transfer of service
 - D - Denotes disconnection of service
 - (E) - Denotes DNO supply
 - (P) - Denotes Private cable supply (NCC)
 - R+L - Raise and Lower column required

P01.1	Text	Rev	Revision details	Chkd	Appd	Date
Designed:	LA					Date: 02/2026
Drawn:	LA					Date: 02/2026
Checked:	SC					Date: 03/2026
Approved:	AB					Date: 03/2026



Client
BDW HOMES

Project Name
NEW DEVELOPMENT MARRIOTS PARK TAVERHAM

Drawing Title
PROPOSED STREET LIGHTING LAYOUT (Phase 2) INSTALLS PARISH LIGHTING

Original Drawing Size : A1 Scale : 1:500
 Dimensions : -

Drawing Status
PRELIMINARY Suitability
 S0

Drawing No
AC-N-873.2 Rev
 A



RESIDUAL DESIGN HAZARDS
 (The following information has been collected from Preconstruction Information and the Amey CDM Hazard Management Process.)
 No High Risks Present

STREET LIGHTING KEY
 OFF REEPHAM ROAD
 TAVERHAM
 NR10 4EA

Lantern Detail
 21x
 Urbis Axia 3.1, 8 LED lantern head, post top mounted, complete with 7 pin NEMA socket, & one part photo cell, 2.33Klm output, Neutral white LED colour.
 (AXIA 3.1 5267 8 OSLO SQUARE GAINT @600mA NW 740 230V)
 (20watts- UMSUG code 42 0020 0000 100 / Regime code 581)

Lantern to have 7 pin NEMA socket, complete with 1 part photo cell with a switching level of 35/18 lux.
 (Westire Acro or similar approved)
 Lantern head to be wired in black pvc/pvc 1.5mmsq 3 core flex, via a fused double pole isolator located in the base compartment of the lamp column.
 Isolator Specification:-
 Charles Endirect / L2/SF/A1 (LSI/02) CHA.END
 Twin mod unit 32amp DP SWT, Fuse carrier, Plastic Gland-Plate

All Wiring, Cabling, Earthing & Bonding to be installed to the latest (18th) Edition IEE Wiring Regulations

Column Detail
 21x
 Proposed 6m mounting height, galvanised tubular steel column. (Norfolk PFI specification or similar approved)
 Each lamp column to have a 230v single phase unmetred supply installed.
 Install new LED lantern head as per above specification.

Concrete adoptable pad to be provided when no footpath is available. See AMEY SL SD 014 Rev B Hard Margin Detail

STREET LIGHTING NOTES

- All works to comply with Taverham Parish council requirements for Street Lighting Works.
- New column positions to be agreed with parish / site engineer prior to installation.
- Typical Column setback:
 - Within footpath : Back of Path
 - Within verge : 1.8m from kerb edge
 - Where there is insufficient highway to accommodate a street lighting column, columns are to be located immediately behind the edge of the highway, are to be installed in an area approx 750mm x 450mm deep which is to be dedicated as part of the Highway.
- All new street lights to be supplied by a new Unmetered service (direct connection to local DNO electricity main)
- New Development site - developers responsibility to provide suitably positioned supply main at construction stage.
- All electrical installation work to be carried out in accordance with the requirements of HEA, NICEIC and BS7671 (IET Wiring Regulations latest edition).
 Electrical Installation Certificates to be forwarded to: Taverham Parish Council offices.
- Refer to Lighting Design Schedule for detailed apparatus specification.
- Luminaires should include a 3 pin NEMA socket with a One part photocell (On/Off ; 35/18)

Column Numbering Key:

N - Denotes new service
 T - Denotes transfer of service
 D - Denotes disconnection of service
 (E) - Denotes DNO supply
 (P) - Denotes Private cable supply (NCC)
 R+L - Raise and Lower column required

P01.1	Text	Rev	Revision details	Chkd	Appd	Date
Designed:	LA					Date: 02/2026
Drawn:	LA					Date: 02/2026
Checked:	SC					Date: 03/2026
Approved:	AB					Date: 03/2026



Client
BDW HOMES

Project Name
**NEW DEVELOPMENT
 MARRIOTS PARK
 TAVERHAM**

Drawing Title
**PROPOSED STREET LIGHTING
 LAYOUT (Phase 3)
 INSTALLS PARISH LIGHTING**

Original Drawing Size : A1 Scale : 1:500
 Dimensions : -

Drawing Status
PRELIMINARY Suitability
 S0

Drawing No
AC-N-873.3 Rev
 A

SCALE 1:500